

SIGMA Piping Products

700 Goldman Drive
Cream Ridge, NJ 08514
Toll: 800.999.2550
Ph: 609.758.0800

SPECIFICATIONS

STEEL WELDING FLANGES

ALL STEEL WELDING FLANGES MANUFACTURED FOR AND BY
UNIQUE FITTINGS & FLANGES® CONFORM TO, COMPLY WITH, AND ARE
MANUFACTURED TO THE FOLLOWING STANDARDS:

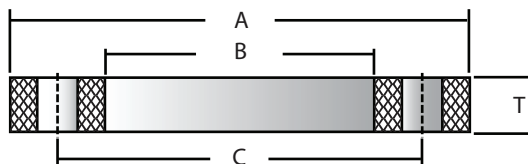
ASTM A 105- Standard Spec for Steel Brass, Carbon, Alloy and Cold Finished
ANSI B16.5- Standard Spec for Pipe Flanges and Flanged Fittings



- Bolts shall be smaller in diameter than the normal bolt hole diameter
- Pressure rating at atmospheric temperature for sizes 2" - 12" is 175 psi
- These flanges have the same diameter and drilling as class 125 Cast Iron flanges (ANSI B16.1)
- Minimum bolt lengths shall be the sum of the mating flange maximum thicknesses, the gasket, and the depth of the nut plus 1/8" (3.2mm) minimum before torquing. If threaded rods are used, they shall be the same length as the bolts determined previously, plus the depth of the nuts, plus Flanges conform to AWWA C207 Class

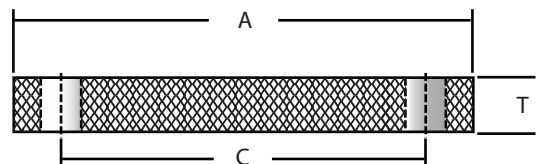
DESCRIPTION

SLIP-ON & REDUCING



DESCRIPTION

BLIND



FIELD INFORMATION

CONTRACTOR _____

JOB _____

LOCATION _____